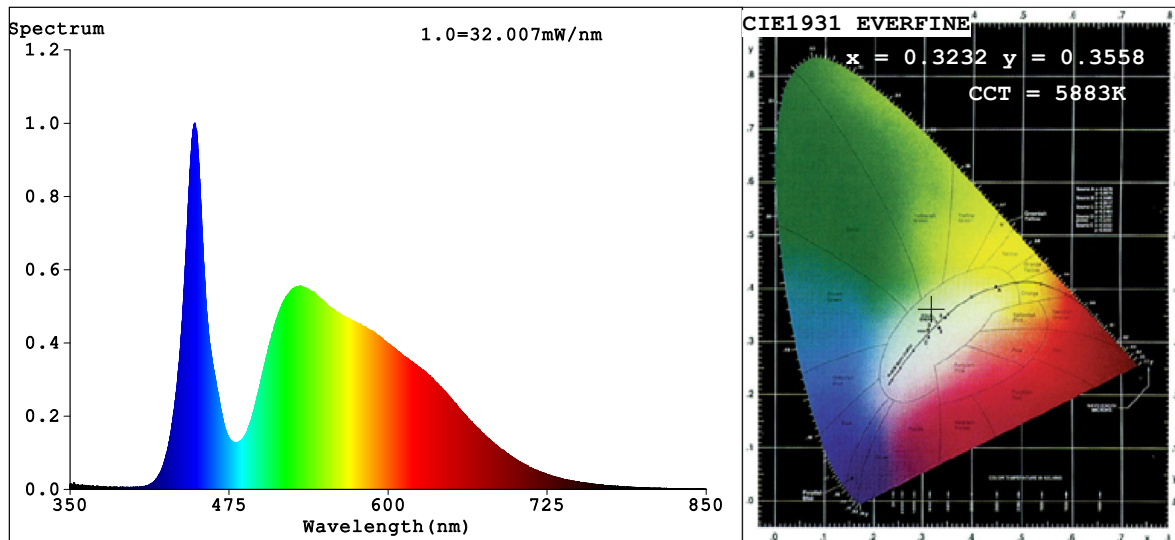


Spectrum Test Report



Color Parameters:

Chromaticity Coordinate: $x=0.3232$ $y=0.3558$ $u'=0.1952$ $v'=0.4835$
 $CCT=5883K$ ($Duv=0.0115$) Dominant WL: $\lambda_d = 524.5nm$ Purity=4.5%
 Ratio: R=13.4% G=82.8% B=3.8%; Peak WL: $\lambda_p = 448.1nm$ FWHM=18.3nm
 Render Index: $R_a=78.9$ CRI=70.9 TM30: $R_f=81$ $R_g=96$
 R1 =77 R2 =80 R3 =82 R4 =80 R5 =78 R6 =74 R7 =86
 R8 =73 R9 =12 R10=53 R11=80 R12=50 R13=77 R14=90 R15=73

Photo Parameters:

Flux = 1031 lm Eff. : 87.14 lm/W Fe = 3.277 W

Electrical parameters:

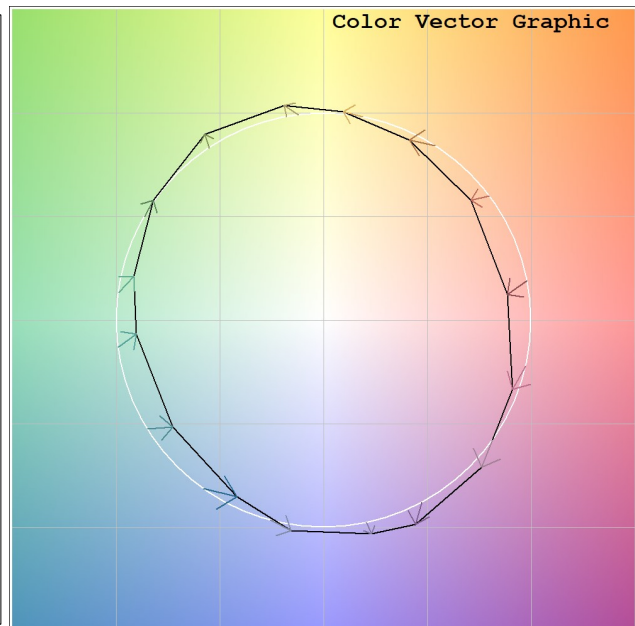
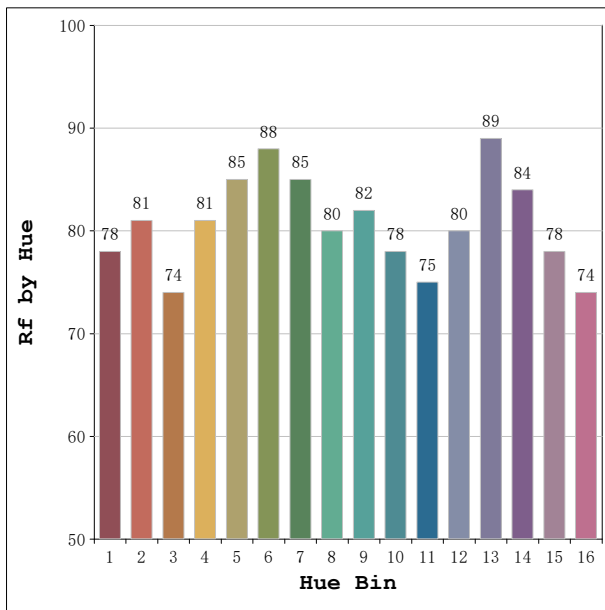
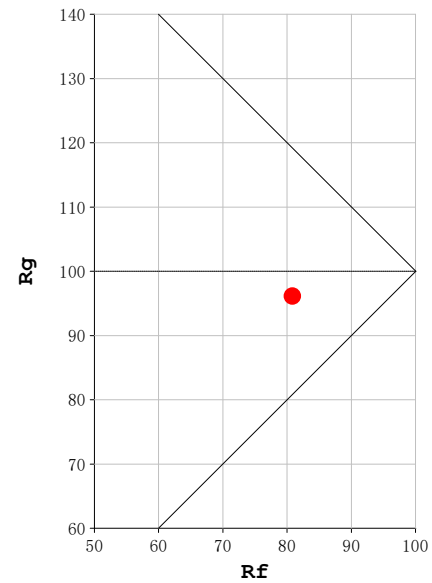
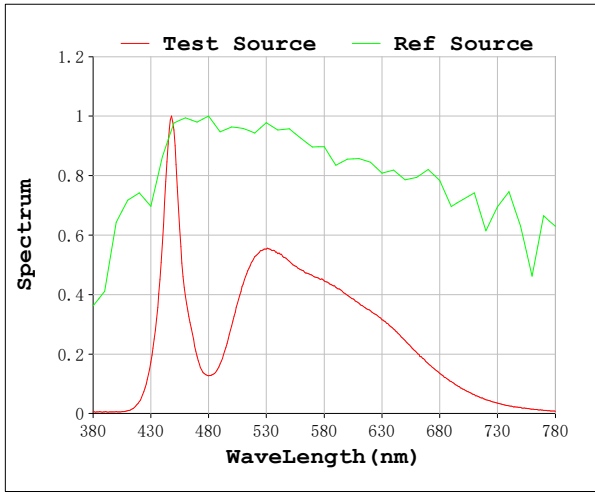
V = 230.09 V I = 0.05665 A P = 11.83 W PF = 0.9074

Status: Integral T = 1250 ms Ip = 44539 (68%)

Model: Ecoled Infinity Cob
 Tester: Sergio Carneros
 Temperature: 20Deg
 Manufacturer: Luz Negra

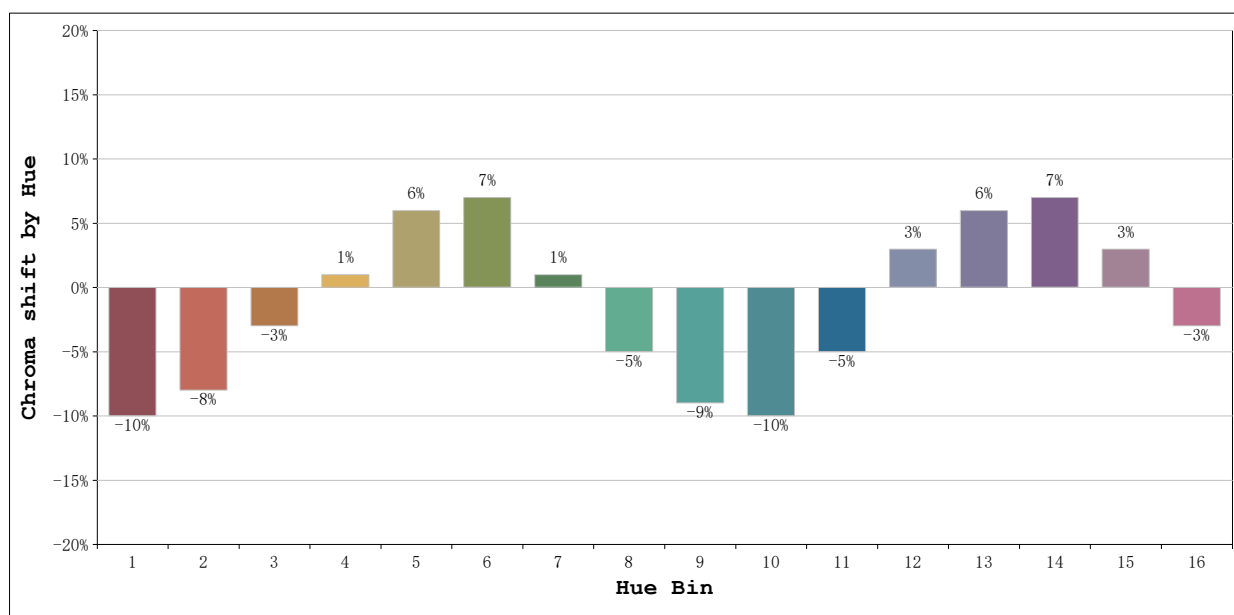
Number: 34.073 Roll to Roll
 Date: 2026-03-25 09:52:54
 Humidity: 50%
 Remarks: 100cm de tira flexible

Rf: 81 **CCT: 5883 K** **u': 0.1952**
Rg: 96 **Duv: 0.0115** **v': 0.4835**



Model:Ecoled Infinity Cob
Tester:Sergio Carneros
Temperature:20Deg
Manufacturer:Luz Negra

Number: 34.073 Roll to Roll
Date:2026-03-25 09:52:54
Humidity:50%
Remarks:100cm de tira flexible



			Graphic shift(%)	
Hue Bin	Hue Angle	Rf	Chroma	Hue
1	0.0° - 22.5°	78	-10	-3
2	22.5° - 45.0°	81	-8	3
3	45.0° - 67.5°	74	-3	12
4	67.5° - 90.0°	81	1	10
5	90.0° - 112.5°	85	6	6
6	112.5° - 135.0°	88	7	-1
7	135.0° - 157.5°	85	1	-8
8	157.5° - 180.0°	80	-5	-8
9	180.0° - 202.5°	82	-9	-4
10	202.5° - 225.0°	78	-10	6
11	225.0° - 247.5°	75	-5	16
12	247.5° - 270.0°	80	3	11
13	270.0° - 292.5°	89	6	1
14	292.5° - 315.0°	84	7	-7
15	315.0° - 337.5°	78	3	-13
16	337.5° - 360.0°	74	-3	-11

Model:Ecoled Infinity Cob
Tester:Sergio Carneros
Temperature:20Deg
Manufacturer:Luz Negra

Number: 34.073 Roll to Roll
Date:2026-03-25 09:52:54
Humidity:50%
Remarks:100cm de tira flexible